

Vehicles Travelling Up the Eastbound A50 exit Slip

There have been an increased number of reports of vehicles travelling up the A50 Junction 5 eastbound exit slip road towards Hilton. Appendix 1 and 2 show images taken from dashcam footage on 23/02/24 and 27/03/24. Both images show a vehicle proceeding up the slip road. This is a dangerous occurrence and Hilton Parish Council is therefore concerned that an accident may occur. In the case of the footage of 23/02/24 it appears that the vehicle approaches the slip road from the Etwall direction and turns left up the slip road.

The junction provides the link between the A516, A5132 and the A50 and is configured as 2 separate but joined roundabouts below the A50. Graded slip roads link the roundabouts to the A50 in both the east and west directions. Appendix 3 shows the layout of the junction, the red arrow shows where vehicles are travelling up the slip road. The slip roads have a speed limit of 70mph.

Hilton Parish Council have reviewed the junction and propose that there is potential for some minor low cost improvements that could be made to reduce the risk of traffic travelling up the slip road. These are shown in Appendix 4.

A check has been carried out on Sat Nav and mapping systems for journeys from Hilton to Willington Services and these all correctly show travel to the A50 eastbound using the correct slip road. Therefore it is not considered that there is an issue with these systems.

It is understood that the roundabouts are the responsibility of Derbyshire County Council Highways and the slip roads are the responsibility of National Highways. As the traffic is turning off the roundabout onto the slip road Hilton Parish Council believe that the resolution of this issue is under the control of Derbyshire County Council. The following report was given via the County Councillor at the Hilton Parish Council meeting on Wednesday 27th March 2024:

A50 Slip Road - I have asked our safety officer to comment regarding alleged vehicles going the wrong way up the slip road. The vehicles approach from the right only as it's the circulatory of the roundabout. The signs are clearly visible and the road markings and kerb alignment are not conducive to encourage access via the wrong direction. There are no concerns from National Highways regarding this. The signs are externally illuminated, correct, legible and visible, and the direction of traffic makes it very difficult to turn effectively left onto the slip road, without seeing these signs. No further action will be taken.

While the above feedback from the DCC safety officer is technically correct the fact remains that on a regular occurrence vehicles travel up the eastbound exit slip road. The 2 images from dashcam footage in this document confirm this. The slip road has a speed of 70mph and traffic leaving the A50 at this junction is travelling at this speed when leaving at this junction. Taking into account the image shown in Appendix 2 a very serious collision could have occurred where a car turning around could have been hit at 70mph in the side.

Action Required

To prevent risk of a serious accident Hilton Parish Council is requesting that Derbyshire County Council Highways conduct a full review of the roundabout / junction including a risk assessment to understand how improvements can be made. This should be published so it can be shared with the residents of Hilton who are equally concerned. This assessment should be completed as soon as possible.

Mark Coney – Chair Hilton Parish Council

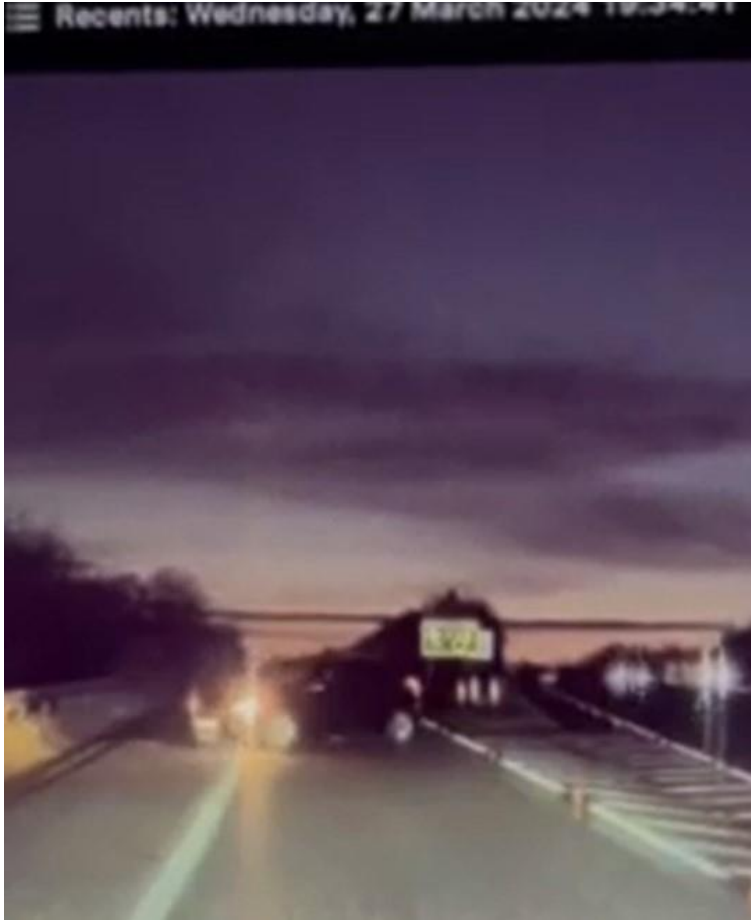
On behalf of Hilton Parish Council

2nd April 2024

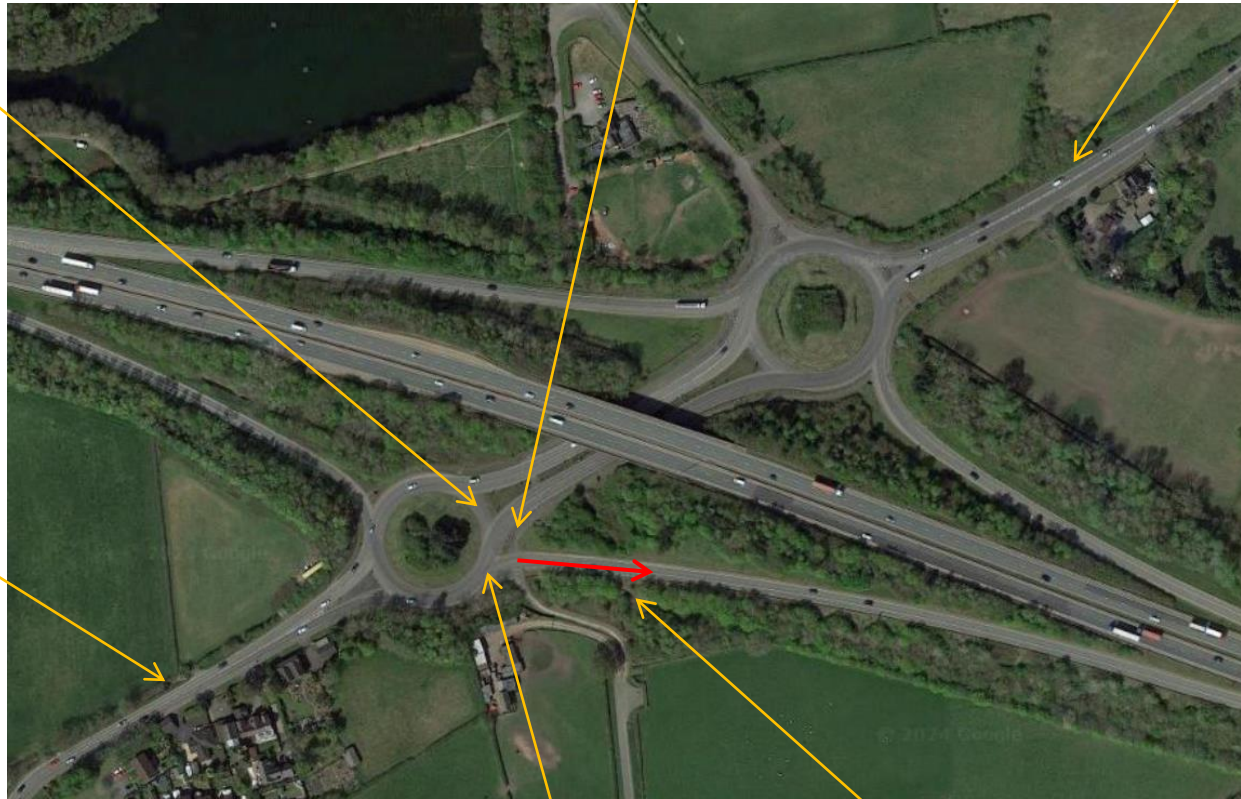
Appendix 1 - Image from Dashcam showing vehicle travelling up the slip road on 23/02/24



Appendix 2 - Image from Dashcam showing vehicle turning after travelling up the slip road on 27/03/24



Appendix 3 – Layout of the Junction



A50 West

A516 to Derby

A50 East

A5132 to Hilton

Vehicles have been travelling Up this slip road



Appendix 4 - Suggested Improvements



When approaching from the Hilton direction motorists could be confused by the direction sign as the righthand 'stub' aligns with the wording for the A50 to Nottingham.

Could the stub indicating the west bound exit slip be angled at 1 O'clock in the same way that the east bound slip road is shown. While the sign is compliant with Chapter 7 this change could remove any confusion.



The bottom of the slip road is wide and the No Entry signs are far apart.

Could 'NO ENTRY' be painted on the road at the end of the slip road?



When approaching from the Derby side of the junction it is not very clear that the slip road to the left is 'No Entry' as the signs face away from the traffic.

There are 2 potential improvements that could be made. The existing signs could be turned slightly so that drivers approaching from the Derby side can see them on approach. In addition to this a 'No Left Turn' sign could be installed immediately prior to the slip road.